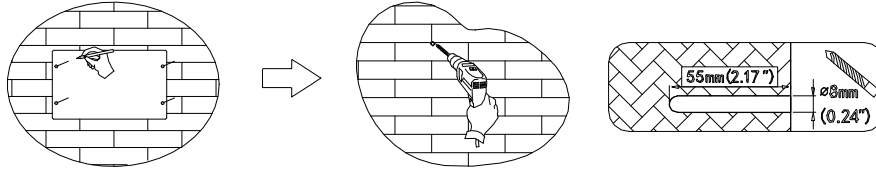


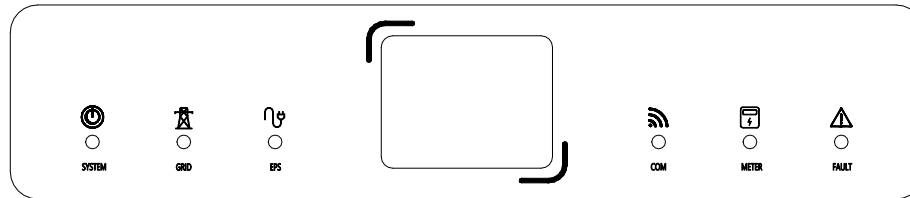
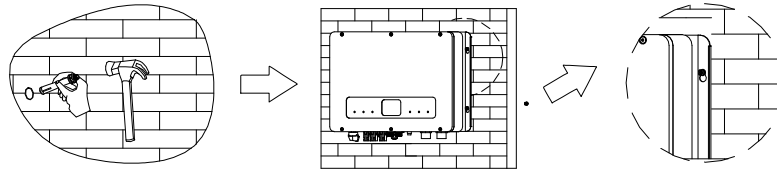
R20

## Installation Guide

1. Please make sure that the thickness of the wall for inverter installations more than 60mm;
2. Please place the bitmap horizontally on the wall and confirm the level by level;
3. Please mark the holes in the 4 mounting holes of hole pattern;
4. Drill a hole with a depth of 55mm at the mark with a drill of  $\phi 8\text{mm}$ ;



5. Please expand the bolt with a hammer into hole in the wall and install the nut (including elastic flat pad), do not tighten the nut;
6. Please hang the inverter on the expansion bolt and tighten the nut with a wrench.



522mm

240mm

420

600