

User Guide

Features:

- The product has a built-in installation driver, which is very easy to install.
- Resolution: When connected to the USB3.0 or USB2.0 port of a PC / laptop, it is displayed as 1920 * 1080.

Attention:

Please turn off your anti-virus software and computer protection software when using.

Please be assured that our driver will not cause damage to the system.

The screen may be off and on during the installation and resolution setting may be adjusted due to the installation.

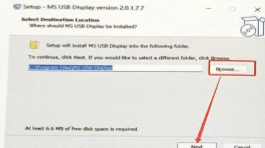
Step 1: Turn off and exit the antivirus software. After connecting the board to the computer, click in to install the driver for the corresponding system in "Removable Disk".

• You can go to this URL to find out more drivers to

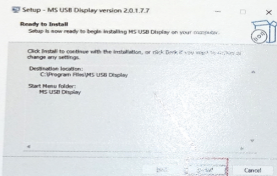
download. <http://www.ultrasemi.com/usbdisplay/index.html>



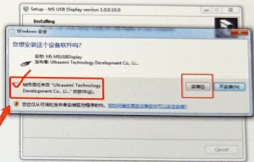
Step 2: Click "Browse" to choose where to install, and then click "Next".



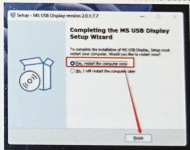
Step 3: Click "Install" to install



Step 4: After the installation is complete, the computer needs to be restarted to be effective



Step 5: After restarting the computer, there is an icon in the lower right corner, which means the installation is successful



Step 6: After restarting the computer, there is an icon in the right below, which means the installation is successful



Kind reminder:

- Supports Win7/8/10 and Apple OS systems
- Compatible with USB 3.0 and USB 2.0; Supports resolutions of 1920 * 1080/ 800 * 600 respectively
- Does not support Vista system, Linux system, Win tablet, XP system
- Win7 currently does not support expansion mode